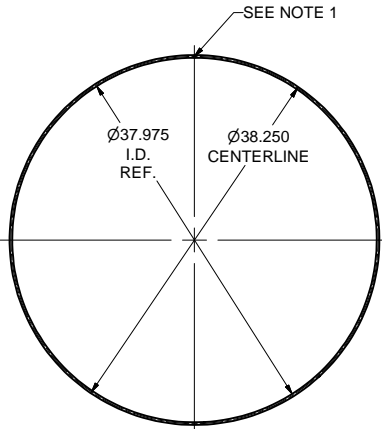
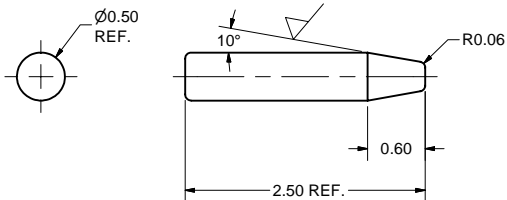


REVISIONS				
SYM.	ZONE	DESCRIPTION	DATE	APP.
A		PART ITEM 10 ADDED. NEW REVISION OF PART ITEM 4 SHOWN.	9/26/06	VM
B		NEW REVISION OF ITEM 2 SHOWN: TUNER PORT IS SIMILAR TO INPUT COUPLER PORT.	10/10/06	VM

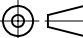



10 38" I.D. x 1/4" W O-RING
FILE NAME: 7110-030
SHEET NO.: 1
DFT. SCALE: 1:10
MATERIAL: 1/4" VITON OR EPDM O-RING CORD
QTY: 2 PER ASSEMBLY
NOTES: 1. VACUUMPROOF GLUE CORD ENDS WITH LOCTITE SUPER GLUE OR EQUIV.
CORD LENGTH: L = 120.16 IN.

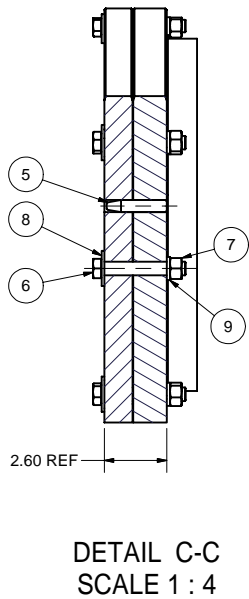
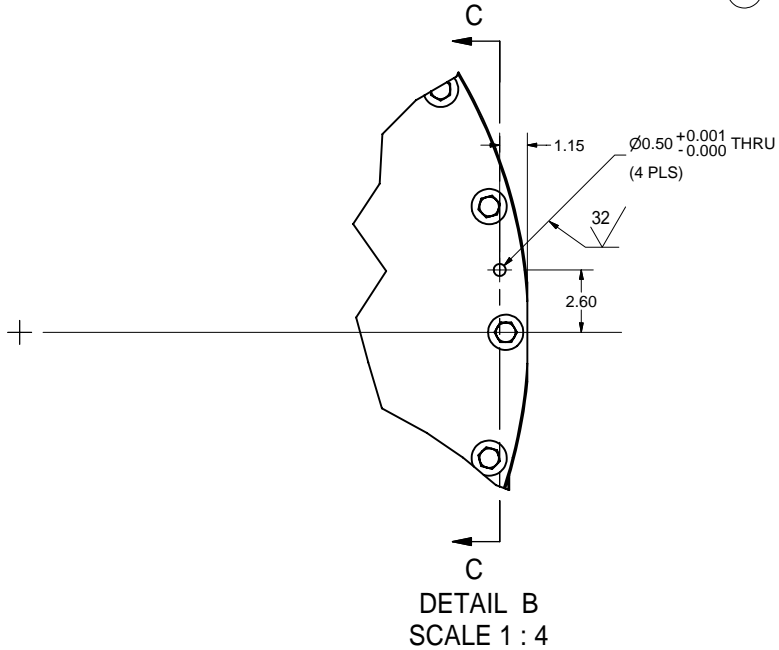
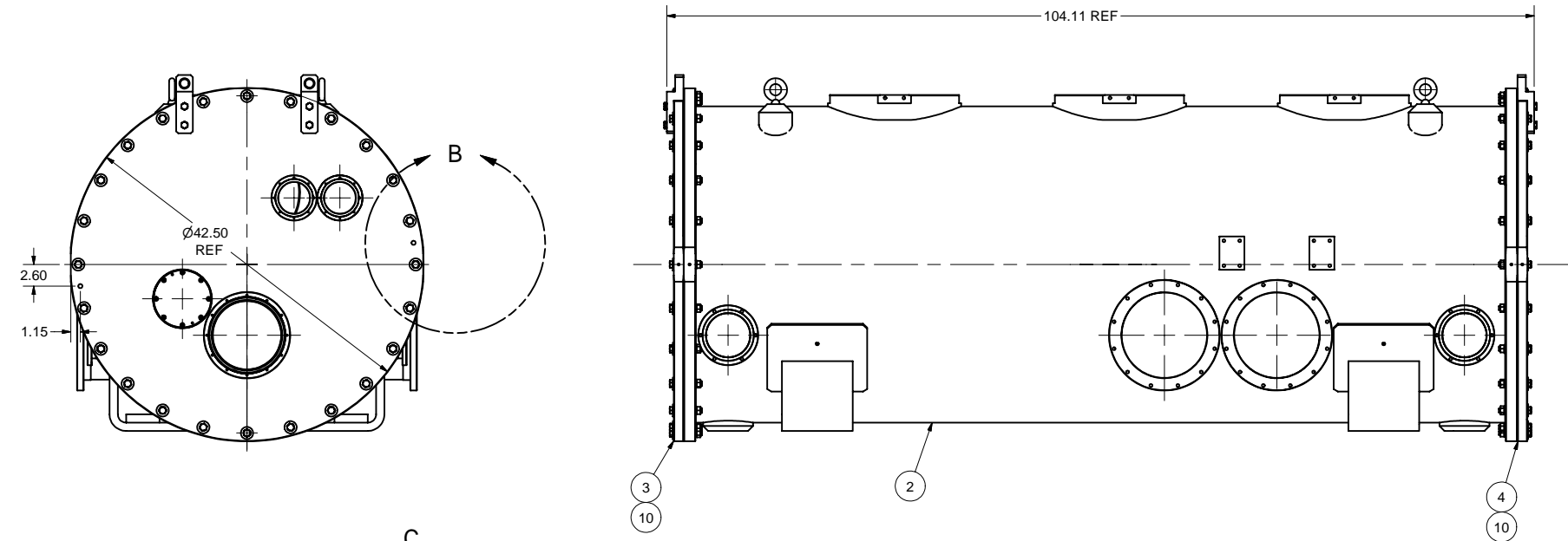


5 1/2" x 2-1/2" PIN MODIFICATION
FILE NAME: 7110-030
SHEET NO.: 1
DFT. SCALE: 1:1
MATERIAL: SEE NOTE 1
QTY: 4 PER ASSEMBLY
NOTES: 1. MAKE FROM 1/2" x 2-1/2" STANDARD HARDENED STEEL DOWEL PIN.

10	7110-030 (SH. 1)	38 ID x 1/4 W O-RING	2				
9	PUR.	9/16 Helical Spring Lock Washer	48				
8	PUR.	9/16 Washer	48				
7	PUR.	9/16-18 Hex Nut	48				
6	PUR.	9/16-18 x 3-1/2 Hex Cap Screw	48				
5	7110-030 (SH. 1)	1/2" x 2-1/2" PIN MODIF.	4				
4	SEE 7110-005	VACUUM VESSEL BEAM EXIT WALL	1				
3	SEE 7110-004	VACUUM VESSEL BEAM ENTRANCE WALL	1				
2	SEE 7110-003	VACUUM VESSEL	1				
1	7110-030 (SH. 1)	HORIZONTAL TEST VACUUM VESSEL ASM.	X				

	ITEM	DWG. NO.	DESCRIPTION			G1	G2	G3	REMARKS	REV.
				QUANTITY						
PRINT DISTR.	PLOT DATE: 9/27/2006 CAD FILE NAME: 7110-030.idw									
SH. NO. 1 OF 1	7110-030	CR1	UNLESS OTHERWISE SPECIFIED: DIMENSIONS ARE IN INCHES: TOLERANCES ON: .00 ± .010 .000 ± .005 FRACTIONS ± 1/64 ANGLES ± 0.5° ALL SURFACES 	CORNELL UNIVERSITY FLOYD R. NEWMAN LABORATORY ITHACA, NY 14853						
				ERL HORIZONTAL TEST CRYOMODULE Horizontal Test Vacuum Vessel Assembly ASSEMBLY - PIN LOCATION						
REV.	B	CHECKED BY: V.M.		DRAWN BY applin	DRAWN FOR M.L.	DATE 8/29/2006	SCALE	D	7110-030 SH. NO. 1 OF 1	REV. B
		APPROVED BY: V.M.								

FOR MACHINING LUBRICANT USE ONLY
ALKALINE DETERGENT LUBRICANT CIMSTAR 40
OR EQUIVALENT APPROVED BY CORNELL LEPP



1 HORIZONTAL TEST VACUUM VESSEL ASM.
FILE NAME: 7110-030
SHEET NO.: 1
DFT. SCALE: 1:10
MATERIAL:
QTY: 1
NOTES: